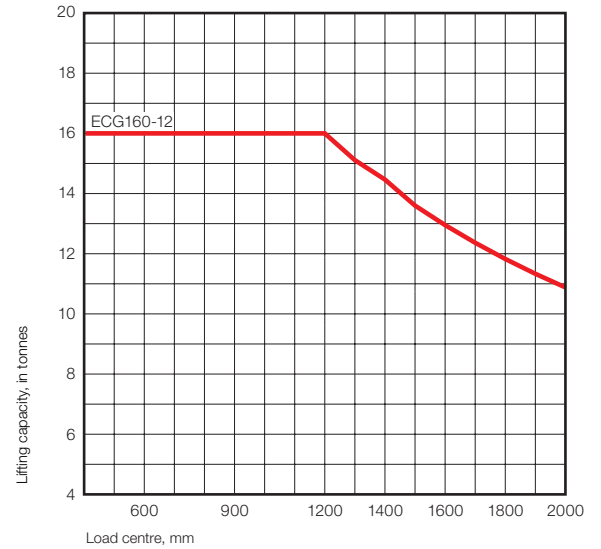
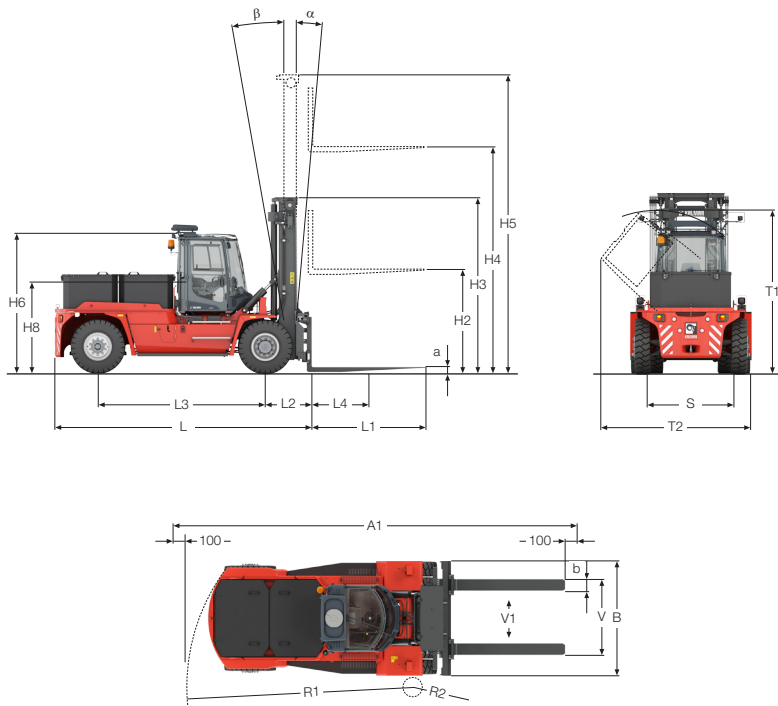


ECG160-12 | Electrical drivetrain | Duplex, clear view, standard - LH 5000

Lifting data	ECG160-12
Lifting capacity, rated (kg)	16000
Lifting speed L4, unloaded – at 70% of rated load (m/s)	0,35 - 0,35
Lowering speed L4, unloaded – at rated load (m/s)	0,40 - 0,40
Driving data	
Travelling speed forward, unloaded – at rated load (km/h)	20 - 18
Travelling speed backward, unloaded – at rated load (km/h)	20 - 18
Gradeability max., unloaded – at rated load (%)	22 - 13
Gradeability at 2 km/h, unloaded – at rated load (%)	20 - 12
Drawbar pull, max. (kN)	53
Weight of truck	
Weight, with battery - without battery (kg)	25000 - 17200
Axle load front, unloaded – at rated load (kg)	12100 - 38100
Axle load rear, unloaded – at rated load (kg)	12900 - 2900
Drivetrain	
Drive axle – type	Differential and hub reduction
Drive motor, hourly capacity (kW)	2 x 37 kW
Speed control, principle – number of steps	High frequency MOSFET, AC - Stepless
Pump motor hydraulics, intermittent capacity – duty factor (kW)	2 x 50 kW - S3 15%
Pump motor brakes, intermittent capacity – duty factor (kW)	1 x 5,1 kW - S3 15%
Pump control, principle – number of steps	High frequency MOSFET, AC - Stepless
Battery	
Number of batteries	2
Dimensions, W x H x L (mm)	1638x1150x780
Capacity at 5h discharging – voltage (Ah – V)	2x1085 - 120
Max. charging current (A – V)	x - 120
Weight, with battery - without battery (kg)	3760
Wheels	
Type	Pneumatic
Dimension, front – rear (inch)	12.00x20/20PR
Number of wheels, front – rear (*driven)	4* - 2
Pressure (MPa)	1,0
Miscellaneous	
Steering system, type – maneuvering	Hydraulic servo - Steering wheel
Service brake system, type – affected wheels	Oil cooled disc brakes – Drive wheel
Parking brake system, type – affected wheels	Dry, spring activated disc brakes - Drive wheel
Max. hydraulic pressure (MPa)	18,0
Noise level EN12053 with ECO modes - equivalent inside cabin LpAZ (dB(A))	69
Noise level EN12053 with ECO-modes - equivalent outside cabin LwAZ (dB(A))	104
Hydraulic oil volume (l)	220



Dimensions

Length of truck (mm)	L	5420
Width of truck (mm)	B	2540
Height of basic machine (mm)	H6	2920
Height of seat (mm)	H8	1790
Wheelbase (mm)	L3	3500
Load centre (mm)	L4	1200
Track (c-c), front – rear (mm)	S	1855 - 1960
Turning radius, outer – inner (mm)	R1-R2	4785 - 420
Ground clearance, min. (mm)		350
Max. height when tilting cab (mm)	T1	3390
Max. width when tilting cab (mm)	T2	3380
Min. aisle for 90° stacking with forks (mm)	A1	8385
Lifting height (mm)	H4	5000
Mast height, min. (mm)	H3	4195
Mast height, max. (mm)	H5	6695
Tilting of mast, forward - backward (°)	α - β	5 - 10
Fork width (mm)	b	250
Fork thickness (mm)	a	100
Length of forkarm (mm)	l	2400
Width across fork arms, max. - min. (mm)	V	2360 - 700
Sideshift \pm at width of across fork arms (mm)	V1-V	415 - 1530

The design and materials specification are subject to alternation without prior notice.
Tolerances according to K-standard 95430.0008/0009

Kalmar offers the widest range of cargo handling solutions and services to ports, terminals, distribution centres and to heavy industry. Kalmar is the industry forerunner in terminal automation and in energy efficient container handling, with one in four container movements around the globe being handled by a Kalmar solution. Through its extensive product portfolio, global service network and ability to enable a seamless integration of different terminal processes, Kalmar improves the efficiency of every move. www.kalmarglobal.com

Kalmar is part of Cargotec. Cargotec's sales in 2018 totalled approximately EUR 3.3 billion and it employs around 12.000 people. www.cargotec.com



Cargotec Sweden AB
Movägen 1
SE-341 32, Ljungby, Sweden
tel. +46 372 260 00
www.kalmarglobal.com